

S A N T E X
R I M A R
G R O U P

SANTEX
RIMAR
GROUP

SANTEX
RIMAR
GROUP

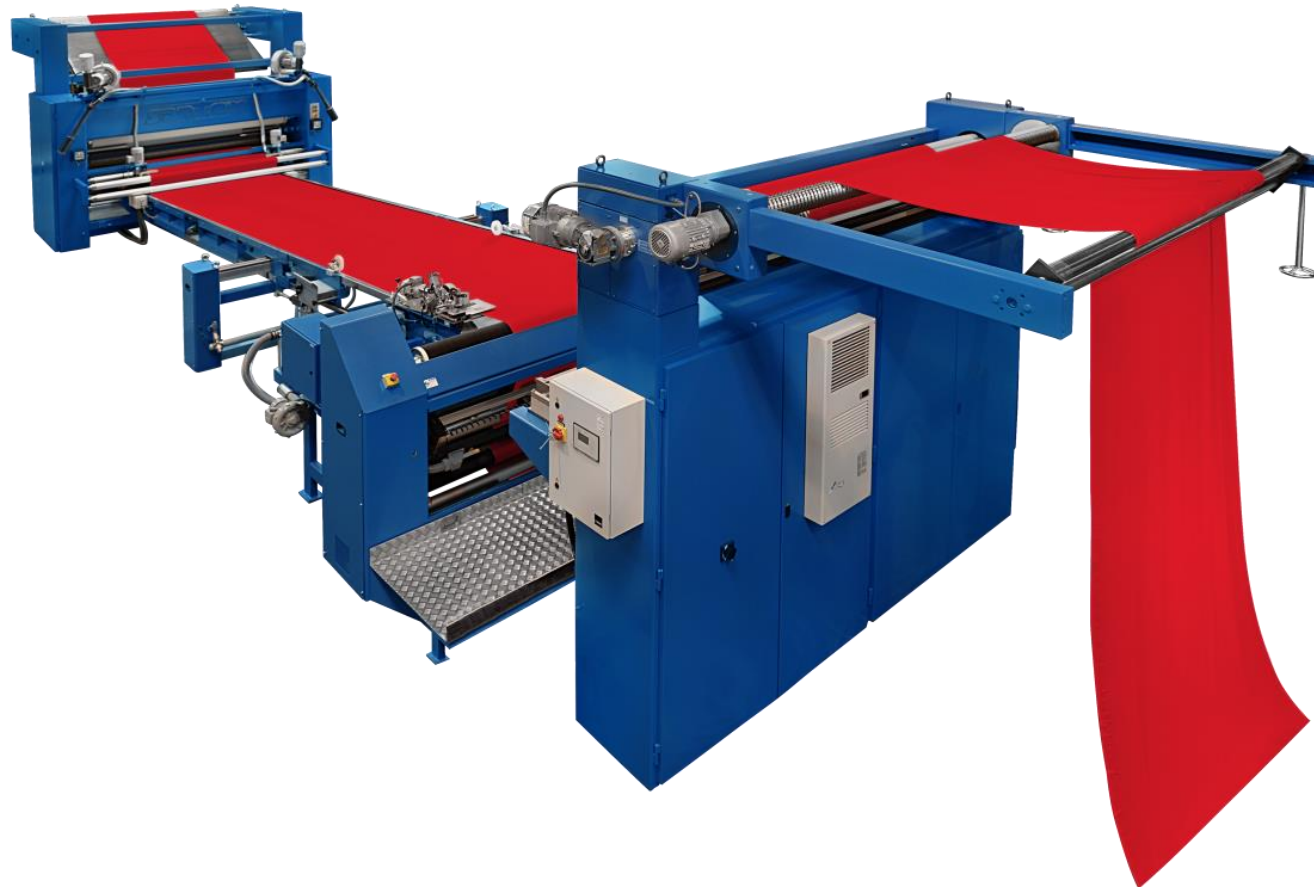
SANTACOMPACT RD

STEPHAN WALDISPUEHL

27.05.2016

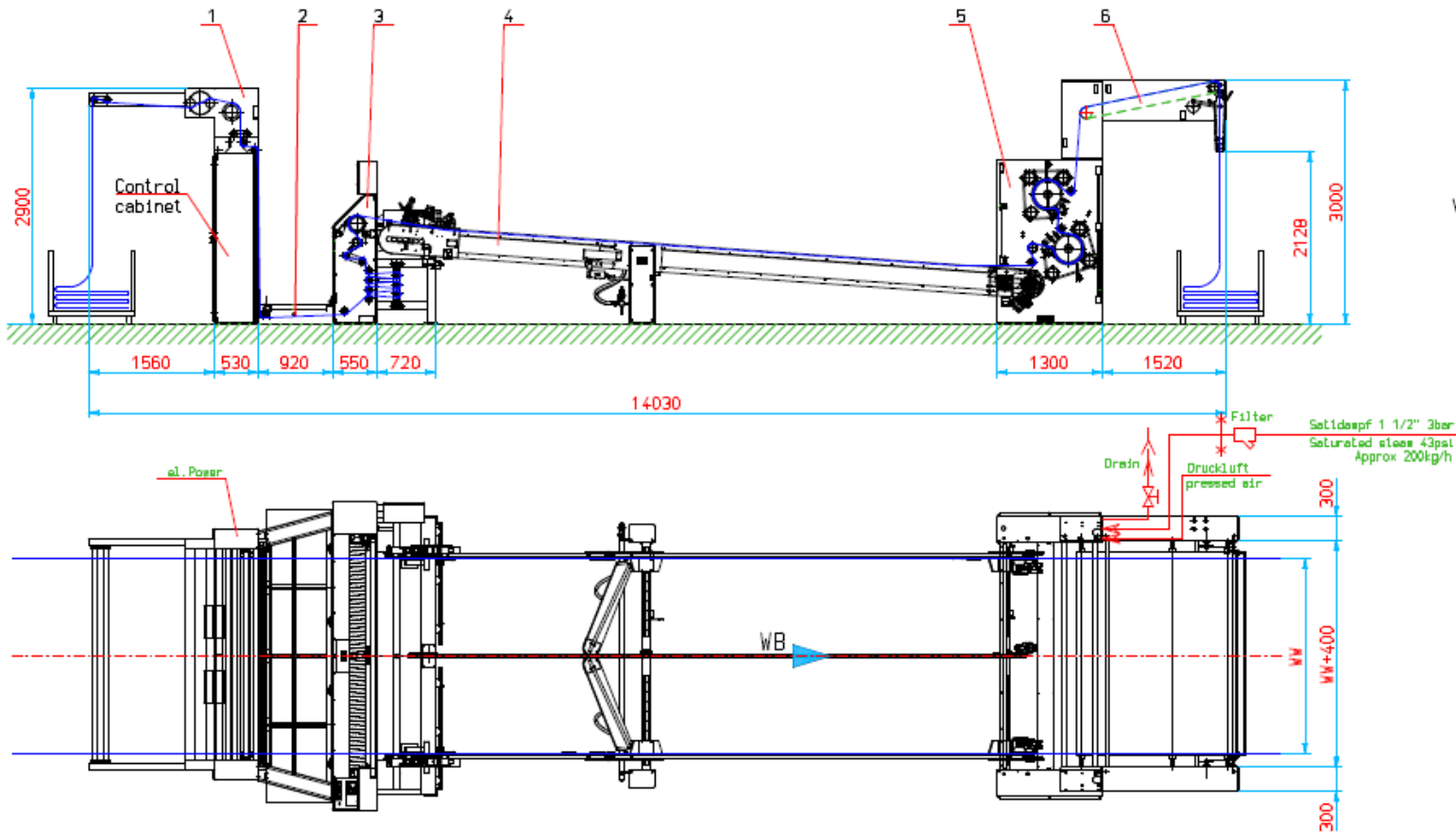
SANTACOMPACT RD

The high performance felt belt compacting machine



SANTACOMPACT RD

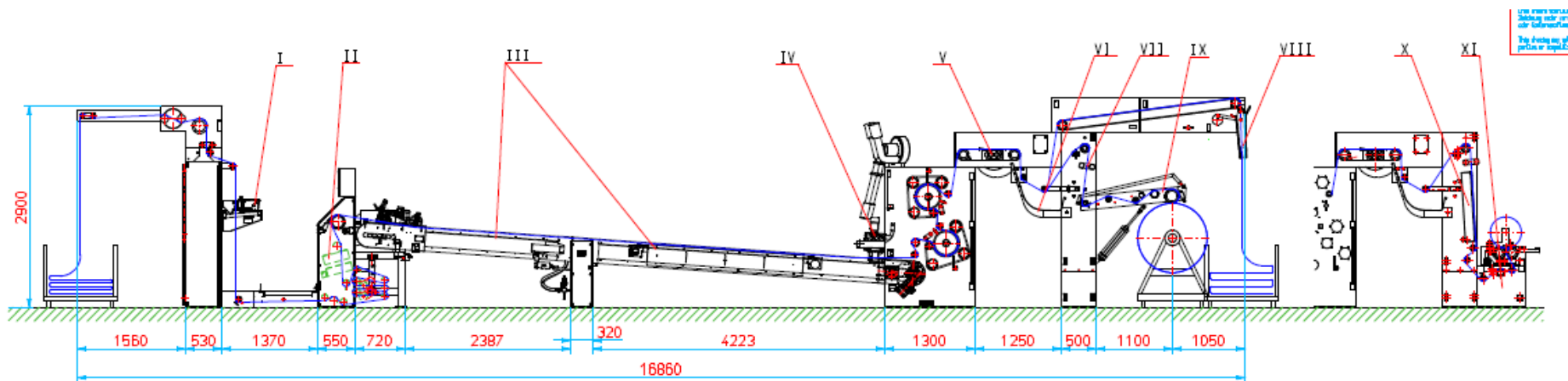
Standard layout



SANTACOMPACT RD

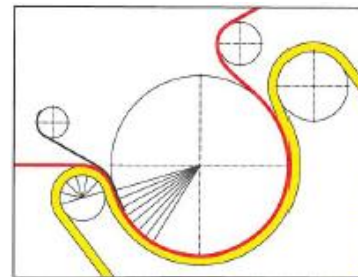
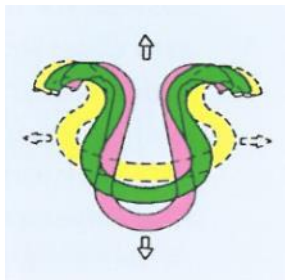
Option layout

- I. Rotor dampening system
- II. Weft straightener
- III. Glue wheel incl. edge drying
- IV. Edge cutting device
- V. Cooling unit
- VI. J-Box
- VII. Width measurement
- VIII. Ionization unit
- IX. Peripheral winder
- X. Inspection table
- XI. Batch winder



SANTACOMPACT RD

- Continuous levelling; steaming; smoothing; compacting process of open width fabrics
- Reduction of permanent residual shrinkage
- Tension control of the fabric by load cell
- Uniform fabric made of cotton or blends
- High constancy in the final width
- Low maintenance costs



SANTACOMPACT RD

Technical information

- Working speed up to 50 m/min
- Working width 200-260 cm
- Connecting power 45kw / 75 kw
- Dimension 14 m – 17 m

SANTACOMPACT RD



- Inlet frame with centering device E&L and rotor dampening system Weko – view from back side / operation platform



- Feeding frame with operation platform
- Feeding frame with integrated touch panel type Siemens TP1200

SANTACOMPACT RD



- Over-feed roller with spiral roller right in front
- Direct access for operator for installation process in opening the roller protection



- View from the back side to the feed in frame
- Singel fabric support guides the fabric through all the process from over-feed roller to the first compacting unit
- The guiding rail is controlled and adjusted by the system and sensors of E&L

SANTACOMPACT RD



- Mechanical edge uncurling device with sensor in front of the crump roll and pinning device



- Side view uncurling device – crump roll – pinning device
- Short distance from the over feed roller to the uncurling device in order to avoid tension and elongation on the fabric

SANTACOMPACT RD



- V-Steaming box is linked to the guiding rail to avoid steam distribution outside of the fabric
- (the cover over it will be added on customer site)



- V-Steaming box

SANTACOMPACT RD



- New width adjustment system with linear bearing – maintenance free system
- View to the pin chain and guiding rail made in stainless steel
- Spindle system is completely covered and sealed to avoid lints sticking on it



- Underneath the linear bearing system – the spindle system is completely covered and sealed to avoid lints sticking on it

SANTACOMPACT RD

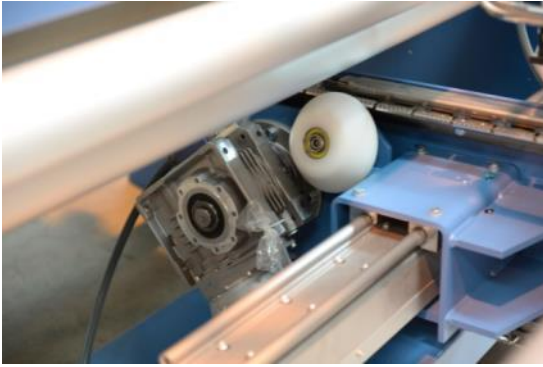


- Stainless steel pin chain equipped with rolls and sliding plates made of high performance plastic

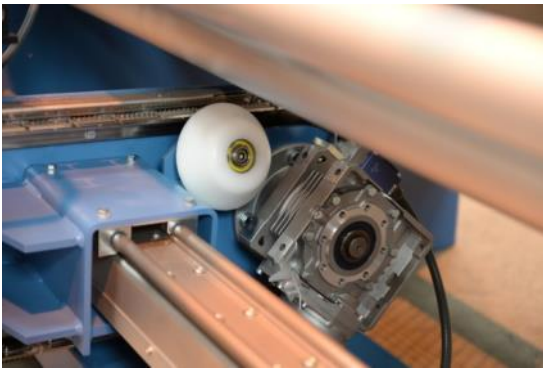


- Guiding rail and pin chain are made of stainless steel
- Left / right chain system have individual drive each

SANTACOMPACT RD



- Depinning device in front of the load cell and spiral roller to open the edges in front of the first compacting unit



- New width adjustment system with linear bearing – maintenance free system
- Individual chain drive system

SANTACOMPACT RD



- Compacting unit – view form the front side



- Compacting unit – view form the back side

SANTACOMPACT RD



- Exit of the machine equipped with the plaiter



SANTACOMPACT RD



- Electrical control cabinet is equipped with brands with european origin
- Electromechanical design and software engineering is done from SANTEX
- SANTEX remote access

SANTACOMPACT RD



- Weko rotor dampning system



- Mahlo automatic weft straightener



- Edge glueing system



- E&L edge trimming and cutting system

SANTACOMPACT RD



- Exit with cooling unit, J-Box, rising batch winder and inspection table



- Rising batch winder



- J – Box for non stop operation